

**majorprojects**group

Demolition | Consulting | Engineering

# LIEBHERR R994-200 250t Excavator



ACN 135 179 207  
[majorprojects.net](http://majorprojects.net)

121 Woodstock Street  
Mayfield NSW 2304 Australia

T +61 (0) 2 4967 7900  
E [info@majorprojects.net](mailto:info@majorprojects.net)

# TECHNICAL DATA



## Engine

Cummins diesel engine	
Rating per DIN/ISO 3046-1	937 kW (1273 HP) at 2100 RPM reduced to 840 kW (1142 HP) at 1800 RPM
Model	KTTA38-C 1350
Type	12 cylinder V-engine water-cooled direct injection turbo-charged after-cooled
Displacement	37,8 l/2307 cu.in
Bore/Stroke	159/159 mm/6.26/6.26 in
Air cleaner	dry-type air cleaner with automatic dust ejector, primary and safety elements
Fuel tank	3900 l/1030 gal
Electrical system	
Voltage	24 V
Batteries	2 x 170 Ah/12 V
Alternator	24 V/100 Amp
Engine idling	sensor controlled
Air system	1 cylinder compressor maintenance-free pressure regulator anti-freeze pump



## Hydraulic System

Hydraulic pumps for attachment and travel drive		3 variable flow axial piston pumps
Max. flow		2 x 757 l/min. + 1 x 505 l/min./ 2 x 200 gpm + 1 x 133 gpm
Max. hydraulic pressure		320 bar/4640 PSI
Hydraulic pump for swing drive		1 reversible swash plate pump, closed-loop circuit
Max. flow		450 l/min./119 gpm
Max. hydraulic pressure		400 bar/5800 PSI
Pump regulation		electro-hydraulic, pressure compensation, flow compensation, automatic oil flow optimizer
Hydraulic tank pressurization		0,5 bar/7.3 PSI
Hydraulic tank capacity		1800 l/476 gal
Hydraulic system capacity		2400 l/634 gal
Hydraulic oil filter		1 full flow filter in return line, 1 high pres- sure filter for each main pump
Hydraulic oil cooler		separate vertically mounted cooler, thermo- statically regulated fan
Electronic engine speed sensing		at rated engine speed setting
Lubrication		central lubrication system



## Hydraulic Controls

Servo circuit	independant, electric over hydraulic pro- portional controls of each function
Emergency control	via accumulator for attachment functions with stopped engine
Power distribution	via monoblock control valves with inte- grated primary and flanged-on secondary relief valves
Flow summation	to attachment, hoist, stick and bucket cylinders and travel drive
Control functions	
Attachment and swing	- proportional via joystick levers
Travel	- proportional via foot pedals or hand levers for all travel functions
Additional functions	via foot pedals or joystick toggle switch



## Swing Drive

Hydraulic motor	2 Liebherr axial piston motors
Gear	2 Liebherr planetary reduction gears
Swing ring	Liebherr, sealed triple roller swing ring, internal teeth
Swing speed	0 - 3,7 RPM
Swing torque	677 kNm
Swing-Holding brake	hydraulically released multi-disc brakes, maintenance-free



## Uppercarriage

Design	torque resistant designed upper frame in box type construction for superior strength and durability
Attachment mounting	parallel length girders
Catwalks	on the left side of the upper



## Operator's Cab

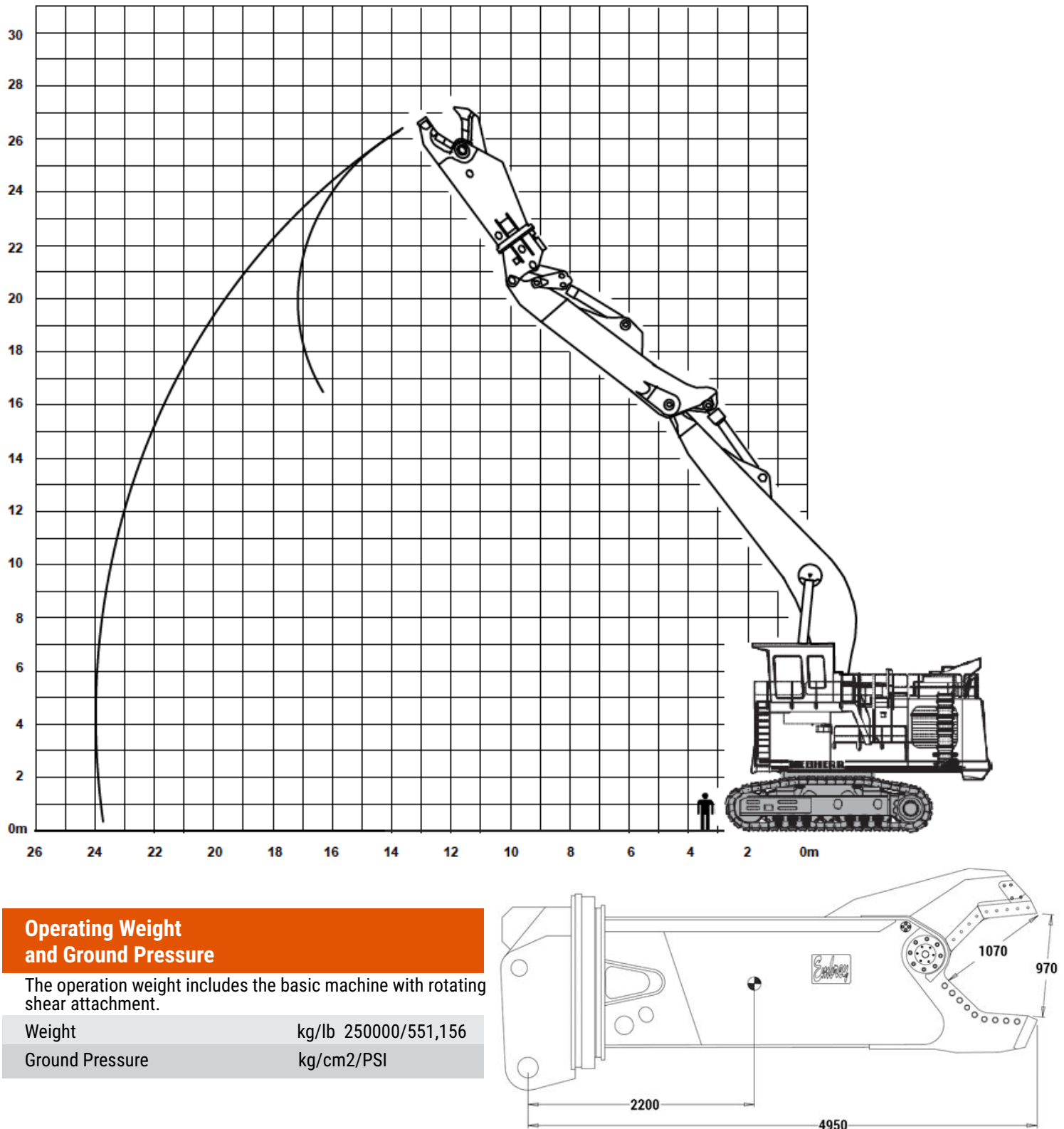
Design	resiliently mounted, sound insulated, large windows for 360° visibility, integrated falling object protection (FOPS)
Operator's seat	suspended, body-contoured with shock absorber, adjustable to operator's weight, additional training seat is standard equip- ment
Controls	joystick levers integrated into armrest of seat
Monitoring	via LED Display
Acoustical and optical signal	in case of low engine oil pressure or low coolant level. Automatic engine shut of
Optical signal	in case of engine overheating or low hydraulic oil level. Destroking of main pumps
Heating system/ Air conditioning	heavy duty, high output air conditioner and heater unit



## Undercarriage

Design	3-piece undercarriage, box type structures for center piece and side frames, stress relieved
Hydraulic motor	axial piston motor
Travel gear	Liebherr planetary reduction gear
Travel speed	0 - 2,6 km/h/0 - 1.6 mph
Drawbar pull	1480 kN
Parking brake	hydraulically actuated wet multi-disc brakes, maintenance-free
Hydraulic brake valve	mounted separately in the undercarriage
Track components	B 11, maintenance-free
Track rollers/ Carrier rollers	10/2
Track pads	forged double grouser
Track chain adjustment	hydraulic
Transport	undercarriage side frames are removable

# ROTATING SHEAR ATTACHMENT



## Embrey EDS92R Rotating Shear Attachment fitted with heavy duty Slew Bearing

Specifications					Shear Force 345bar (5000psi)				Appetite					
Model	Weight	Jaw Opening	Jaw Depth	Reach	Throat	12"	APEX	TIP	I Beam	Plate	Round	Square	Pipe	Concrete
EDS92R	12,950kg	970mm	1170mm	4950mm	2134T	1158T	530T	297T	864mm	35mm	165mm	152mm	711mm	889mm



# IMAGES



