



Business for good

WORKING FOR A **SUSTAINABLE** ENVIRONMENT

majorprojectsgroup

Demolition | Consulting | Engineering



BHPB, NEWCASTLE STEELWORKS DEMOLITION, NEWCASTLE, NSW

COMPANY OVERVIEW

Major Projects Group is a leading Australian Demolition Contractor that trades as a Social Enterprise (certified by Social Traders) and donates half of its distributable profits to charity. Our experience combined with a forward-thinking and social outlook makes us unique in the demolition industry.

Our company provides expertise in industrial, commercial, marine and special high-risk demolition services across Australia. We are particularly experienced working within live and decommissioned facilities, such as mine sites, smelters, power stations, chemical and manufacturing plants.

We combine the resources and capabilities of a large demolition company with the personal touch of a smaller company, creating an innovative and personalised approach to demolition activities giving our clients the attention they deserve.

As part of this personalised approach, we limit the number of projects we undertake at any given time, ensuring the best experienced personnel are available, hands on, for the projects that we decide to undertake.

With a 40-year history, a modern fleet of specialised equipment and certified management system, Major Projects Group is capable of undertaking any demolition project in Australia.

Let us show you how we apply cutting edge engineering processes & methodologies – that remove personnel from extreme risks – to the most complex demolition challenges all the while saving you money and time and doing good for the environment.

EXPERIENCE

+\$30M

Largest Single Project undertaken in the company's history

SAFETY

0 LTIFR & MTIFR

Since re-entering the contracting industry in 2017

ENVIRONMENT

+95%

Recycling rate on most of our demolition projects

SOCIAL PROCUREMENT

+2.5%

Of company revenue spent on social procurement between 2018 and 2022

CAPACITY

250T

Largest demolition excavator in our Fleet

SOCIAL RESPONSIBILITY

+\$750K

Donated to charity between 2018 and 2022

CONTENTS

Who We Are	6
Mission, Vision and Values	6
Social Enterprise	7
How we Are Different	8
Major Projects Foundation	9
Our History	11
Management Team	16
What We Do	18
Industrial Demolition	19
Commercial Demolition	19
Marine Demolition	20
Asbestos & Hazardous Materials Removal	20
Project Management & Engineering Services	21
Demolition Consulting	21
Responsibility	23
Health, Safety, Environment and Quality	23
Licences & Insurances	25
Social Responsibility	27
People & Resources	31
Project Highlights	34
Client Focused	38





**GLENCORE, DEMOLITION OF THE HEAVY MEDIUM PLANT (HMP)
AND ASSOCIATED INFRASTRUCTURE, MOUNT ISA, QLD**

WHO WE ARE

MISSION, VISION AND VALUES



OUR MISSION

Our mission is to create innovative and cost-effective demolition solutions for our customers. Our purpose is to create a sustainable environment for future generations.

OUR VISION

Our vision is to become a champion of environmental stewardship in the demolition industry and inspire other companies to also take the Social Enterprise path.

OUR VALUES

Safety: We always put people's safety first, and provide a happy, healthy and comfortable work environment.

Ethics: We live by the highest standards of integrity, honesty and fairness.

Environmental Stewardship: We protect the natural environment through conservation, sustainable practices and our Foundation activities.

Dynamic Culture: Our employees work in a diverse, inclusive, and collaborative environment, where they are inspired to act like owners, and encouraged to share ideas openly and able to explore initiatives without fear of retribution.

Innovation: We are constantly looking for new innovative solutions to improve industry methods, increase the use of technologies, meet changing customer demands and needs, and better operational systems and processes.

Client Focus: Every time customers deal with us, they feel valued, appreciated and treated as if they were our company's only customer.

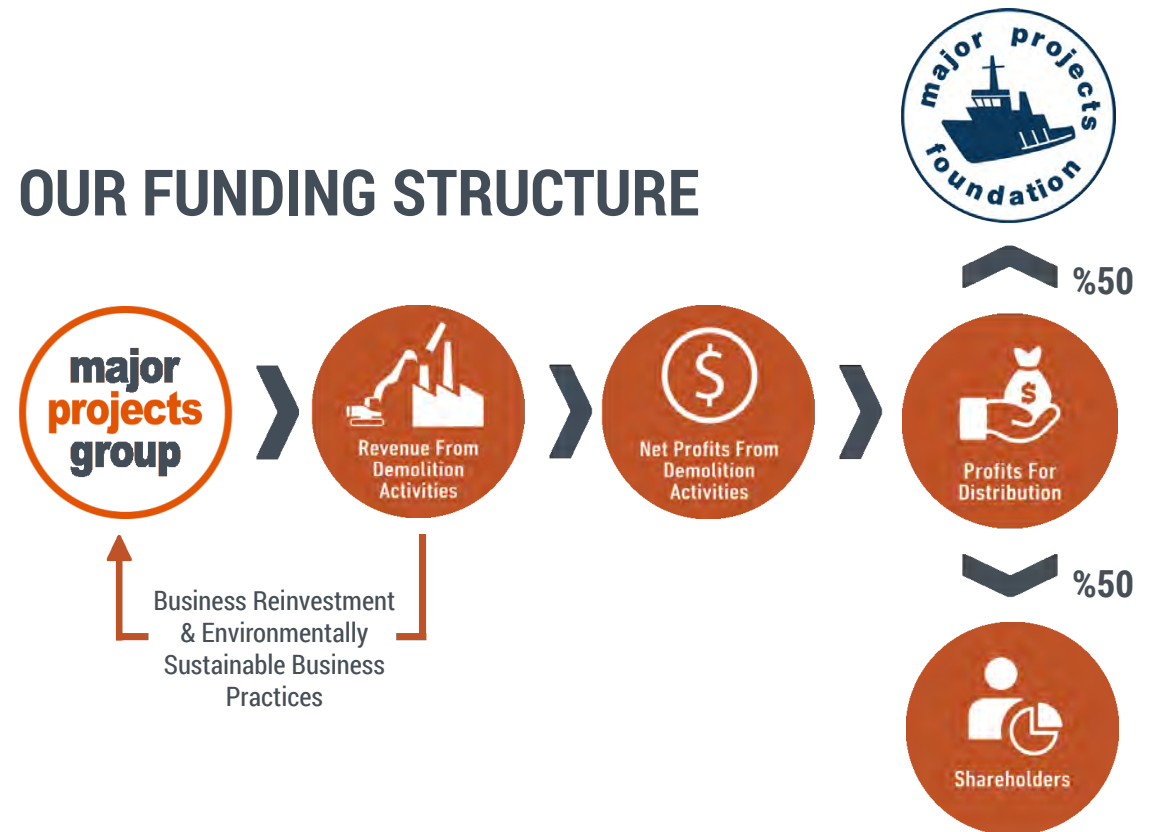
SOCIAL ENTERPRISE

Major Projects Groups allocates 50% of its total profits to our not-for-profit environmental registered charity, Major Projects Foundation. The company is committed to fostering a sustainable environment through the adoption of sustainable business practices and the initiatives undertaken by our Foundation.

KEY POINTS

- Sustainability and the environment are at the core of our business model.
- Recycling rate of over 95% on the majority of demolition projects.
- 50% of profits are donated towards our social mission.
- The Major Projects Foundation responds to emerging maritime issues being faced by Australian coastal and Pacific Island waters.

OUR FUNDING STRUCTURE



OUR CERTIFICATIONS



SUSTAINABLE DEVELOPMENT GOALS



WHO WE ARE

HOW WE ARE DIFFERENT

We are a certified Social Enterprise with an environmental purpose and a commitment to innovation and excellence in demolition. We create highly specialised demolition, decommissioning and deconstruction solutions using cutting edge engineering processes & methodologies that remove personnel from extreme risks.

As a Social Enterprise, Major Projects Group donates half of its distributable profits to its registered charity, Major Projects Foundation, supporting its activities in marine conservation, research, education and action throughout the Pacific region.

Overall Benefits for You: Safer and more cost-effective demolition activities, and the opportunity of working together for a more sustainable environment for future generations.



COMPETITIVE PRICING

Benefits for you: A competitive price all the while providing excellence in demolition service.



INNOVATIVE APPROACH

Benefits for you: Project delivery in a safer and more efficient way.



DEMOLITION SPECIFIC HSEQ MANAGEMENT SYSTEMS

Benefits for you: A peace-of-mind when it comes to health safety, environment and quality performance.



ON-TIME AND ON-BUDGET

Benefits for you: No surprises. We do what we say we can do!



CLIENT FOCUSED

Benefits for you: Being understood by your contractor and having a variety of options available to meet your needs for demolition activities.



EXPERIENCED PEOPLE

Benefits for you: Having people on your project site that know what they are doing.

PREVENTING OIL SPILLS FROM TOXIC WWII SHIPWRECKS



WHO WE ARE

MAJOR PROJECTS FOUNDATION

Major Projects Foundation (MPF) is a marine research and conservation not-for-profit organisation with a focus on deploying engineering solutions to protect ecosystems and cultural heritage in the Pacific region.

In 2018 the Major Projects Foundation's founders purchased an oil industry dive support ship to research and address growing concerns about the possibility of catastrophic oil leaks from the 300 oil tankers, which sank during WWII in the Pacific.

Major Projects Foundation has a partnership with the University of Newcastle, the Ocean Foundation and representatives of 26 Pacific Island Nations, through the Secretariat of the Pacific Regional Environment Programme (SPREP).

The Partnership ensures collaboration between scientists, engineers and marine archaeologists as they work with Pacific island communities to meet the challenges posed by the degradation of wrecks.



OUR FOUNDATION PARTNERS & DONORS



OUR HISTORY

With a history dating back to the 1960's, Major Projects Group has undertaken some of the largest demolition projects in the Southern Hemisphere. As a result of a few mergers & acquisitions, the company was even listed on the Australian stock exchange during the 2000's. After then almost a decade of mainly providing demolition consulting services, Major Projects Group re-entered the market as a demolition contractor, establishing itself as an innovative force within the demolition industry and a force for good for the environment.

FROM SIMPLE HOUSING TO MAJOR HIGH-RISK DEMOLITION PROJECTS



1970S

ADAMS BROS. DEMOLISHERS

Starting in 1968, the first family demolition business was established, with the hand-demolition of houses and salvage of all materials for sale. The Adams brothers, Paul, Kevin and Peter, all worked in the family business. Paul Adams is currently the Managing Director of Major Projects Group, and Kevin and Peter Adams are also still involved in the business.



1980S

IMPACT DEMOLITION

With the establishment of Impact Demolition in the 1980's, there was a continuing focus on commercial and residential demolition clearing large volumes of structures and making way for a vast network of Melbourne's freeway system.

WHO WE ARE



1990S

ADAMS INDUSTRIAL DEMOLITION

The 1990s saw the development and business re-focussed to operate solely in the industrial demolition sector and leave the cities behind, taking on work in remote areas.

This was a specialisation to undertake projects such as the demolition on mines & chemical plants, asbestos abatement and the remediation, rehabilitation of the cleared sites. Highlights of this time included the introduction of large machine technology in the Australian demolition market, with the delivery and set up of a 160 tonne Liebherr excavator attached with the world's largest rotating shear. The configuration was first used in the demolition of the Tioxide Plant in Burnie, Tasmania. It would be a further ten years before any other Company in Australia saw the benefits of such equipment.



2000S

MOLTONI ADAMS

A merger of Adams Industrial Demolition from the east of Australia and Moltoni Corporation from the west saw the formation of Moltoni Adams; a move that gave both companies access nationwide and a united, impressive client list. We became preferred contractors for some of Australia's most well-known companies, such as BHP Billiton and Xstrata (Glencore).

Focusing specifically on heavy industrial demolition across Australia, particularly in mine sites and remote locations, Moltoni Adams carried out virtually every major heavy industrial demolition project in Australia at that time, including the BHP Steelworks in Newcastle, NSW.

WHO WE ARE



2006

CMA CORPORATION

In June 2006, a further merger with T & T Group saw us float on the Australian Stock Exchange as CMA Corporation Ltd with distinct divisions in Contracting and Scrap Metal. The corporation undertook demolition projects all across the Australasia region and operated scrap yards in New Zealand, Australia, the United States of America and Singapore.



2009

MAJOR PROJECTS GROUP

Further development led to the establishment of Major Projects Group in 2009, with an offering of commercial, industrial and marine demolition contracting and engineering solutions for a large variety of clients across Australia.

Unlike most of our competitors in the demolition marketplace, we concentrate only on selected projects, thus ensuring our expertise and resources are not stretched across the region.

Hence, our clients can rest assured that they will always have the best available team for their project that will exceed their expectations for quality and performance.

In 2018, Major Projects Group officially became one of the first Social Enterprises in the industry.



IDEMITSU, DRAGLINE DL03 DEMOLITION, ENSHAM, QLD

“WITH A 40-YEAR HISTORY, A MODERN FLEET OF SPECIALISED EQUIPMENT AND CERTIFIED MANAGEMENT SYSTEMS, MAJOR PROJECTS GROUP IS CAPABLE OF TACKLING ANY DEMOLITION PROJECT ACROSS AUSTRALIA.”

PASMINCO, COCKLE CREEK SMELTER DEMOLITION, BOOLAROO, NSW



WHO WE ARE

MANAGEMENT TEAM



PAUL ADAMS
MANAGING DIRECTOR

As Major Projects Group's Founder and Managing Director, Paul is the driving force behind the company's recent growth. As a strong advocate for environmental causes, Paul decided to take Major Projects Group down the Social Enterprise path to help its Foundation respond to emerging maritime issues being faced by Pacific Islands nations and Australian coastal waters, including the threat of oil spills from World War II shipwrecks, ghost nets, unexploded ordinance, plastic pollution and the effects of climate change.

With more than 35 years of experience in the removal of full scale redundant industrial assets for blue chip and multinational clients across several industries, Paul is widely recognized as the most senior expert in this field. A highlight in his career was the demolition of the BHP Steel Mill in Newcastle, NSW – at that time, one of the largest demolition projects ever undertaken in Australia, and which generated in excess of 100,000 tonnes of scrap metal.

Paul is a visionary leader that has contributed to major innovations in the demolition industry, including the introduction of large-scale machinery technology and the controlled collapse methodologies of industrial structures without the use of explosives. He has now surrounded himself with a high performing and innovative team to take the demolition industry to the next level.



MARK BISHOP
NATIONAL OPERATIONS

Mark has over 10 years of demolition and civil experience and works as Major Projects Group's National Operations Manager. Mark ensures efficient allocation of resources across numerous demolition projects and ensures that projects are run safely, on time and on budget.

Mark holds a Bachelor of Science degree in Quantity Surveying from the University of Greenwich, London and has previously held positions as Quantity Surveyor, Estimator, Project Manager & Operations Director at one of the leading demolition and civil companies in the UK.

During that time, he delivered numerous projects all over the UK in demolition and civil. Working in a large array of environments ranging from the Brighton in South England London CBD to Glasgow Scotland, he was involved in projects in the Industrial and Commercial sector for clients such as American Express, National Grid, SGN, BNP Paribas, Balfour Beatty, Regal Homes and many more.

WHO WE ARE

MANAGEMENT TEAM



SEBASTIEN HAMMACHER
TECHNICAL MANAGER

Sebastien is Major Projects Group's Technical Manager, who is responsible for leading the company's consulting team in preparing demolition studies for a variety of clients. Sebastien also coordinates all tender submissions, from evaluating the initial enquiry with the estimating team, tracking and managing progress of works and presenting final bids to clients.

Prior to joining Major Projects Group, Sebastien worked first as a Marketing Specialist and then as a Marketing Manager for another leading demolition and civil company in Australia. Sebastien's adaptability, intercultural competence and broad-minded thinking are due, in part, to his extensive international exposure having lived, worked and studied in 6 different countries. Sebastien holds a Bachelor of Economics from the University of Nantes, France, a Bachelor of Arts in Business Administration from Rhodes College, USA and a Master of Business Administration in International Business from the University of Alberta, Canada.

Sebastien's primary focus is to understand client needs so that he along with the Major Projects Group team can continually exceed expectations, deliver world-class service and provide tailored demolition solutions using innovative engineering processes.



KEVIN ADAMS
DEMOLITION CONSULTANT

Kevin is Major Projects Group's in-house Demolition Consultant for heavy industrial infrastructure removal projects, including closure studies, tender document preparation and contractor management. He has a long history in the industrial demolition industry from beginnings in the small family demolition business in the 70's to major mine and infrastructure demolition across Australia.

In 2001 the family business merged with Moltoni Corporation in Western Australia and carried out the demolition of the Newcastle BHP Steelworks. In 2005 Kevin took on the role of Executive Director & General Manager of Demolition until the end of 2006 and from 2013 he has worked as a Senior Consultant in the area of infrastructure removal.

During this time he has also acted as Project Manager on some of Major Projects Group's sites and has been involved in most tender submissions.

WHAT WE DO

FOR OVER 40 YEARS MEMBERS OF MAJOR PROJECTS GROUP HAVE PROVIDED KEY INDUSTRIAL, MARINE AND COMMERCIAL DEMOLITION SOLUTIONS FOR A LARGE VARIETY OF CLIENTS ACROSS AUSTRALASIA.

WE PRIDE OURSELVES ON PROVIDING YOU WITH OUTSTANDING DEMOLITION SERVICES BY APPLYING CUTTING EDGE ENGINEERING PROCESSES & METHODOLOGIES – THAT REMOVE PERSONNEL FROM EXTREME RISKS – TO THE MOST COMPLEX DEMOLITION CHALLENGES ALL THE WHILE SAVING YOU MONEY AND TIME.



WHAT WE DO



INDUSTRIAL DEMOLITION

EXPERTS IN INDUSTRIAL DEMOLITION, DECOMMISSIONING AND DECONSTRUCTION

- Pre-demolition planning and analysis
- Dismantling services
- Decommissioning services
- Project management of asbestos and hazardous material removal
- Total or selective demolition of industrial buildings and structures
- Implosion demolition of industrial buildings and structures
- 3D modelling & simulation
- Removal, disposal and sale of materials from industrial sites
- Recycling and materials reclamation



COMMERCIAL DEMOLITION

INNOVATOR IN COMMERCIAL HIGH-RISK DEMOLITION ACTIVITIES

- Pre-demolition planning & analysis
- Dismantling & asset recovery
- 3D modeling & simulation
- Total or selective demolition of commercial buildings & structures
- Special high-risk demolition
- Controlled & safe explosion
- Project management of asbestos & hazardous material removal
- Recycling & materials reclamation

WHAT WE DO



MARINE DEMOLITION

LEADER IN THE REMOVAL OF MARINE RELATED INFRASTRUCTURE

- Consulting services & budgets for marine demolition works
- Wreck removal
- Project management of hazardous material removal
- Pipeline trenching
- Removal of steel & concrete from below water
- River sediments remediation
- Soil transport
- Removal of debris from seabed
- Initial marine demolition surveys
- Removal of quay walls
- Deconstruction of jetties, docks, piers, bridges, and dams
- Dredging of ports & waterways
- Decommissioning and deconstruction of oil rigs
- Enlargement of ship channels
- Dolphins, fenders, marine structures & port infrastructures
- Recovery of spilled containers and cargo

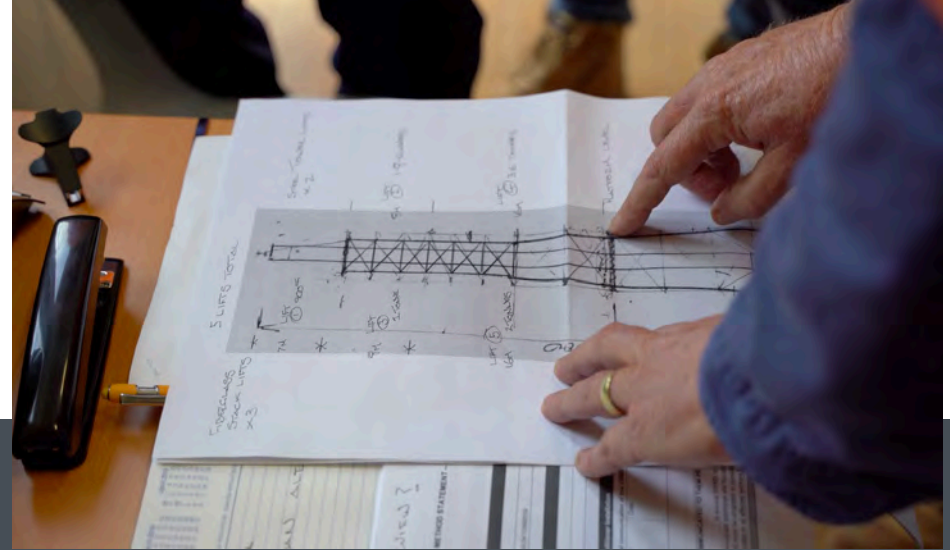


ASBESTOS & HAZARDOUS MATERIALS REMOVAL

PROVIDING SPECIALISED ASBESTOS & HAZARDOUS MATERIALS REMOVAL SERVICES

- Asbestos and hazardous material inspections, testing & consulting
- Asbestos emergency response
- Creation of asbestos registers and management plans
- Hygiene services
- Clearance certificates
- Hazardous waste management
- Air monitoring
- Asbestos and hazardous material project management
- Asbestos abatement from floors, walls and roofing
- Dismantling and disposal of industrial structure framework
- Encapsulation of asbestos-affected areas
- Full disposal of hazardous materials

WHAT WE DO



PROJECT MANAGEMENT & ENGINEERING SERVICES

HIGHLY SOPHISTICATED PROJECT MANAGEMENT & DEMOLITION ENGINEERING SERVICES

- Project management of demolition and associated services
- Creation/review of demolition work methodology statement
- Contract administration
- Creation/review of demolition work program
- Site supervision
- Engineering review of demolition plan
- HSEQ management
- Vibration monitoring
- Creation/review of management plans
- Regulatory approvals

DEMOLITION CONSULTING

EXPERTS IN DEMOLITION ESTIMATE BUDGET & WORK PLAN DEVELOPMENT

- Initial site visits
- Identifying & development of scope of work for the project
- Decommissioning analysis & strategy
- Pre-demolition planning & budget services
- 3D modelling and simulation
- HSEQ strategy
- Project programming, control, financing and implementation
- Pre-condition survey
- Preparation of Tender Documents
- Complete decommissioning estimates & budgets
- Demolition method analysis
- Feasibility studies
- Assets recovery strategy & value estimation



MUSWELLBROOK COAL COMPANY, CHPP DEMOLITION & SALVAGE, MUSWELLBROOK, NSW

HEALTH, SAFETY, ENVIRONMENT & QUALITY

We are dedicated to quality, safety, the protection of the environment, and the promotion of proper health and safety measures across our operations and corporate organisation. Major Projects Group's integrated demolition specific management system is AS/NZS ISO 45001-2018 (Health & Safety), AS/NZS ISO 14001-2016 (Environmental), and AS/NZS ISO 9001-2016 (Quality) certified.

We have continuously improved our HSEQ management system through innovation over the years based on more than 40 years of industry experience in the industry. Our HSEQ system is demolition specific and adapted to meet the needs of our clients, and it is ingrained in our culture.

We also believe that HSEQ innovation is driven through the feedback and ideas we receive from our project site team through daily pre-start consultation and weekly toolbox meetings and from lessons learned from past incidents internally and external to the organisation.



STRATEGICAL ENGINEERING PROCESSES

Throughout our 40 years of experience, our HSE Innovations have mostly been associated with strategical engineering processes.

We, wherever possible, use mechanical demolition methods, such as heavy duty excavators to ensure we follow the “as low as reasonably practical” (ALARP) model to have minimal staff operating within the hazardous area of the demolition zone.

In 1997, Major Projects Group introduced large scale machinery technology into the demolition industry with the purchase of a 160 tonne excavator equipping it with the world's largest rotating shear, for use on the demolition of the Tioxide Chemical Plant in Tasmania. It would be a further 12 years before other Companies saw the benefits of this style of equipment, giving us a wealth of experience over any of our competitors.

The newest addition to our fleet, a 250 tonne excavator with specialised and customised attachments, is one of the largest excavators used for demolition activities in Australia. This latest investment makes our demolition activities even safer by pulling apart structures without the use of labour at the workface. Attacking structures at about 22 meters height, the operator is more than 20 meters away from the building.

In the early 1990s, we also pioneered the controlled collapse methodologies of industrial structures, without the use of explosives, making us by far the most experienced Contractors in Australia using these methods. Since then, we have refined these methods and if appropriate use 3D Modelling & Simulation for extremely technically challenging projects.

LICENCES & INSURANCES

Major Projects Group holds relevant corporate and individual demolition and asbestos removal licences in most Australian states and territories.

LICENCES:

- NSW Demolition Licence – AD211261
- NSW Class A Friable Removal Asbestos Licence – AD213569
- NSW EPA Waste Transport Licence – 21502
- QLD Department of Environment and Science Waste Transport Permit – EA0002664
- VIC Unlimited Demolisher Licence - CBD-U67901

INSURANCES:

- Public & Products Liability
- Professional Indemnity
- Plant and Machinery
- Commercial Motor Vehicle
- Workers Compensation



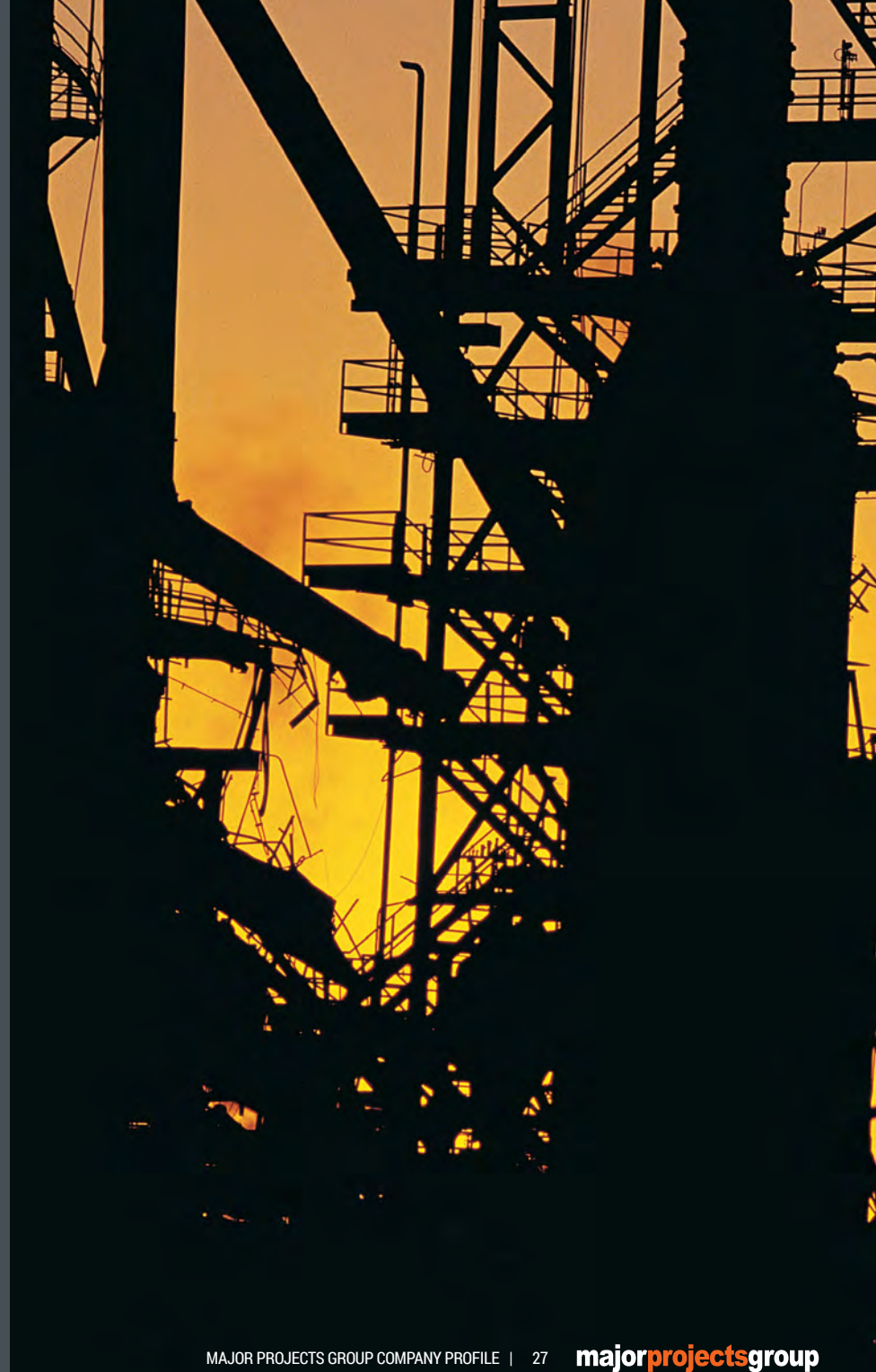
YANCOAL, CHPP DEMOLITION & SALVAGE STAGE 1, STRATFORD & DURALIE, NSW

SOCIAL RESPONSIBILITY

SOCIAL PROCUREMENT

As a certified Social Enterprise, Major Projects Group is also committed to incorporating verified Social Enterprises and Indigenous businesses into our supply chains. Our commitment is to spend at least 2% of each major project contract value on social procurement. This is in addition to the company donating 50% of its annual distributable profits to the charity, the Major Projects Foundation. The 2% target is only a minimum target and based on location and scope of works of each individual project, Major Projects Group frequently exceeds the target.

To achieve that goal, Major Projects Group has formed strong relationships with qualified Social Enterprises and Supply Nation certified businesses over the years. Between 2018 and 2020, Major Projects Group spent over 3% of its income on Social Enterprises and Supply Nation certified businesses.



RESPONSIBILITY

COMMUNITY & STAKEHOLDER

Major Projects Group Pty Ltd undertakes robust and comprehensive engagement with all community stakeholders that may or may not be impacted by Major Projects Group business activities. Major Projects Group recognises its obligations as they pertain to participation, consultation and engagement. To facilitate this commitment, Major Projects Group continually improves its capacity and performance in community engagement through ongoing training, resource development, review and evaluation of its community engagement practices.

Our company works with communities to identify the most appropriate and effective engagement methods in order to continually improve the relationship between all parties and seek to support local community groups and charitable organisations through financial donations.



RESPONSIBILITY

ENVIRONMENTAL RESPONSIBILITY

Environmental responsibility is part of Major Projects Group's core mission. Major Projects Group embraces innovative and progressive approaches to environmentally sustainable goals and is always looking for ways to continually improve its methods and outcomes.

DONATION TO ENVIRONMENTAL CHARITIES

Major Projects Group donates 50% of its distributable profits to environmental charities, including the Major Projects Foundation.

TARGET OF 90 TO 95% RECYCLING RATE

With a commitment to reuse and recycling, the company maximises each opportunity to deliver flexibility around either onsite re-use or offsite disposal of recyclable materials, such as concrete, asphalt, bricks and metals, to appropriate licenced facilities. In the majority of our demolition projects, we achieve a recycling rate of above 90%, and this since our early days. For instance, during one of our most significant projects (under Moltoni Adams), the demolition of the BHP Newcastle Steelworks, 106,000 tons of scrap steel, and over 99%, of the entire Mill by weight was recycled.

TRACKING OF CARBON DATA

Major Projects Group collects its carbon footprint throughout projects and makes every effort to keep it as low as possible. We continuously invest in updating, enhancing, and replacing our plant and equipment to decrease our carbon footprint through more fuel-efficient models and invest in renewable energies. Most of our current plant and equipment models are less than 5 years old.





GRAINCORP, SHIPLOADER NO.2 DEMOLITION, NEWCASTLE, NSW

PEOPLE

At Major Projects Group, our people are at the core of our business and our success. With the contributions, passion, and vision of our highly trained people we continue to build our future and to be highly competitive in the demolition industry.

Major Projects Group employs highly qualified and talented people, including some of Australia's most experienced Operation Manager, Project Managers, Engineers, Demolition Supervisors, Plant Operators and Demolition Trades. Guided by the company's principles of safety, ethics, environmental stewardship, collaboration, innovation and client focus, Major Projects Group's demolition team is committed to delivering exceptional demolition outcomes for our clients.

Our company invests heavily in training, development, and education, because our people are our strength. Our continuous investment in our people help them to stay on top of industry trends, especially with regards to safety. Major Projects Group also provides cross-training in more than one speciality trade and therefore our company remains flexible and is able to always ensure that all of our projects are appropriately staffed to meet peak performance.



PLANT & EQUIPMENT

Major Projects Group has access to a large variety of state-of-the-art plant items, including excavators with various specialised attachments, skid steer loaders, boom lifts, telehandlers, generators, prime movers, trailers, and marine equipment. We continuously invest in updating, enhancing, and replacing our plant and equipment to reduce downtime on project sites and decrease our carbon footprint through more fuel-efficient models.

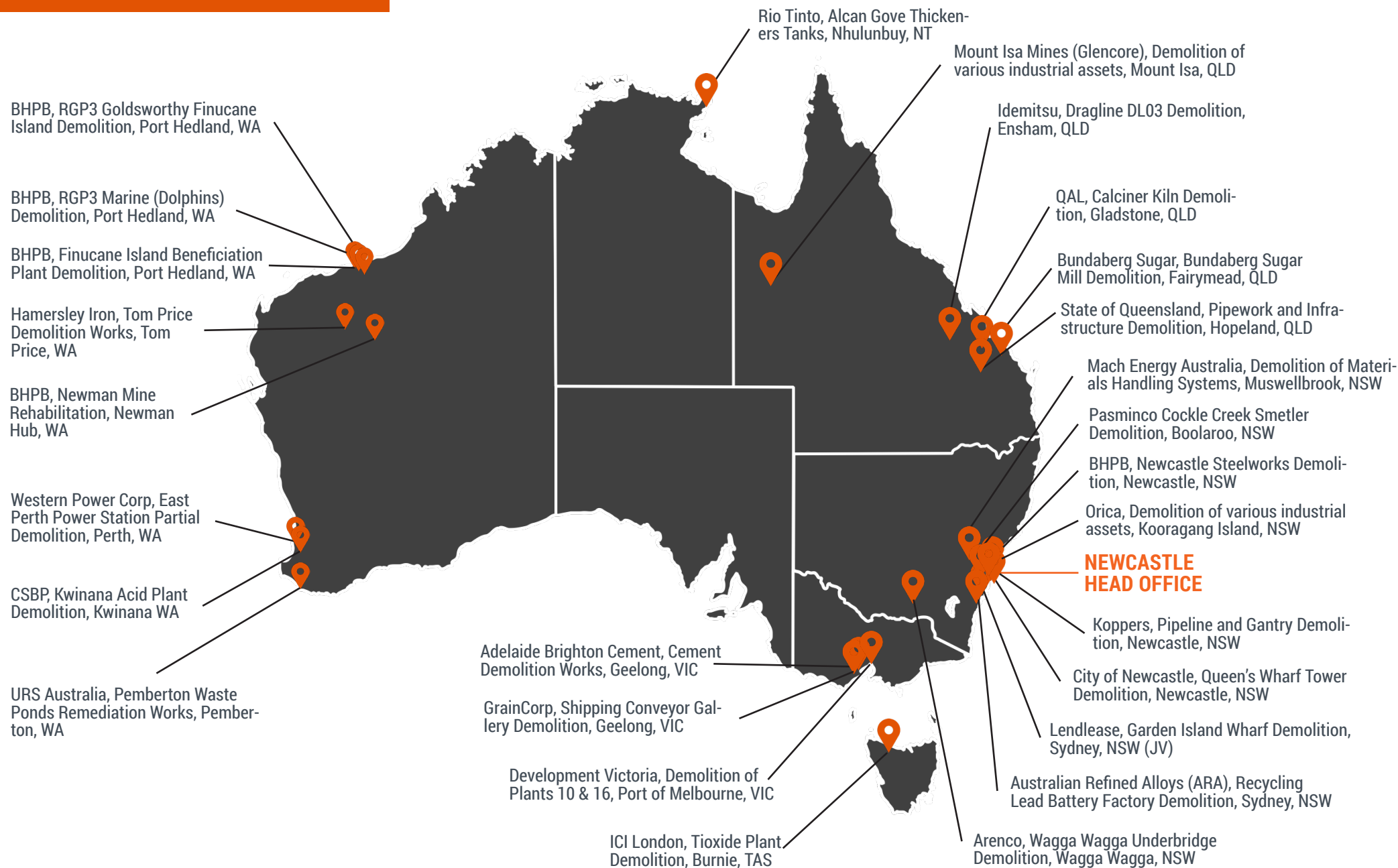
Our largest demolition excavator is a 250-tonne excavator with specialised and customised attachments making our demolition activities even safer by pulling apart structures without the use of labour at the workplace. Attacking structures comfortably up to 30 metres high, the operator is more than 20 meters away from the building. This scale of equipment fits into our overall philosophy to use wherever possible mechanical demolition methods to ensure we follow the “as low as reasonably practical” (ALARP) model to have minimal staff operating within the hazardous area of the demolition zone.





NSW GOVERNMENT, GREEN SQUARE DEMOLITION, ZETLAND, NSW

PROJECT HIGHLIGHTS



MAJOR PROJECTS FROM 1990 TO PRESENT

BHPB, NEWCASTLE STEELWORKS DEMOLITION, NEWCASTLE, NSW

Removal of 120 buildings, 64 of these being major structures such as No. 3 & 4 blast furnaces, Basic Oxygen Steelmaking (BOS), boilers, furnaces, numerous chimneys, stoves and massive workshops. Major Projects Group was not only responsible for the removal of all steel structures but also the removal of asbestos and other hazardous substances.

PASMINCO COCKLE CREEK SMELTER DEMOLITION, BOOLAROO, NSW

The demolition to ground slab level of the entire Cockle Creek Lead and Zinc Smelter, and the removal of all asbestos products.

INFRABUILD, DEMOLITION AND ASBESTOS REMOVAL WORKS, MAYFIELD, NSW

Demolition of the Galvanising Line within the P2 Building and of various industrial assets within the East Mill area. Works also included the removal of asbestos.

ORICA, DEMOLITION OF VARIOUS INDUSTRIAL ASSETS, KOORAGANG ISLAND, NSW

Demolition of 40m boiler chimney and removal of friable asbestos, demolition of boiler house superheater, demolition of NH3 103B Pre-heater, and demolition of Nuclo storage bin.

LENDEASE, GARDEN ISLAND WHARF DEMOLITION (JV), SYDNEY, NSW

Removal of two-story building and removal of existing oil and cruiser wharves. Wharves consisted of a steel reinforced concrete subbase and a second layer of concrete over the top.

AUSTRALIAN REFINED ALLOYS (ARA), RECYCLING LEAD BATTERY FACTORY DEMOLITION, SYDNEY, NSW

Demolition of Australian Refined Alloys Alexandria recycling lead battery factory, including the removal of existing facilities down to ground slab and the removal of an 46m exhaust stack.

NSW DEPARTMENT OF EDUCATION, GREEN SQUARE DEMOLITION, ZETLAND, NSW

Demolition of the Green Square Community Hall and 12m high Hydrotherapy buildings. Works also included removal of all asbestos, decommissioning and demolition of the substation, installation of temporary construction driveways and public footpath reinstatement works.

CITY OF NEWCASTLE, QUEEN'S WHARF TOWER DEMOLITION, NEWCASTLE, NSW

Deconstruction of the 40m high steel framed Queen's Wharf Tower and the walkway leading to the Tower, and make good of the pebblecrete on the wharf. The main deconstruction work had to be completed over a period of 5 days.

CLARENCE VALLEY COUNCIL, TANK DEMOLITION, LAWRENCE AND SOUTHGATE, NSW

Removal of asbestos and a lead coating on two 24.3 meter high water tanks, the demolition of the water tanks themselves, removal of material, and groundworks.

PROJECT HIGHLIGHTS

MACH ENERGY AUSTRALIA, DEMOLITION/ SALVAGE OF MATERIALS HANDLING SYSTEMS, MUSWELLBROOK, NSW

Deconstruction and demolition of the Material Handling System (1km long conveyor, associated sampling conveyors and 25m high train load out (TLO) structure) at Mach Energy Australia's Mount Pleasant Coal Mine in Muswellbrook, NSW.

MANGOOLA COAL MINE, DEMOLITION AND ASBESTOS REMOVAL WORKS, MUSWELLBROOK, NSW

Removal of asbestos and demolition of 9 properties at Glencore's Mangoola Coal Mine, NSW.

GRAINCORP, DEMOLITION OF SHIP LOADER NO.2, CARRINGTON WHARF, NSW

Demolition and removal of the approximately 258 tonnes rail mounted ship loader no. 2 at GrainCorp's Carrington Wharf site, as well as the removal of a 48 tonne boom with loading spout and nozzle.

ARENCO, DISMANTLING OF THE WAGGA WAGGA UNDERBRIDGE, WAGGA WAGGA, NSW

Dismantling of the Wagga Wagga Rail Underbridge, including the demolition of caissons situated in the river. The bridge was located over the Murrumbidgee River and had to be dismantled within a very short time frame.

DEPARTMENT OF DEFENCE, ZETLAND EX NAVY BASE DEMOLITION, ZETLAND, NSW

Major Projects Group demolished to slab level the entire Naval Store Site with approximately 20 hectare of buildings. The 25 hectare site is located a stone throw from the Sydney City Centre. All buildings were removed from site to ground slab level. Seven thousand tonne of steel was recuperated for recycling.

GLENCORE, HMP DEMOLITION & EARTHWORKS, MOUNT ISA MINES, QLD

Demolition of the 50m high Heavy Medium Plant (HMP) and associated infrastructures, such as conveyors, services bridges, water tanks, etc. The works also included major bulk earthworks to establish the new ROM pad in the existing HMP carpark.

GLENCORE, MINES POWER STATION ASBESTOS REMOVAL, MOUNT ISA MINES, QLD

Removal of asbestos containing material at Mines Power Station (MPS) building pipework and surface walls of No. 4 Boiler.

GLENCORE, DEMOLITION OF VARIOUS INDUSTRIAL ASSETS, MOUNT ISA MINES, QLD

Demolition of large core sheds, ventilation fans, substation, 6 large ore bins, 2 water tanks, conveyor, head frame, concrete office buildings, substation, car park and various other industrial assets over a period of 2.5 years.

IDEMITSU, DEMOLITION OF DL03 DRAGLINE, ENSHAM, QLD

Demolition and disposal of the Dragline 03 - Bucyrus Erie 1260W (1,680t).

QLD GOVERNMENT, LINC 029 DISMANTLING OF PIPEWORK, HOPELAND, QLD

Removal of pipework, pipe supports, cabling, foundations and infrastructure within the works zone, steam cleaning, removal and backfilling of 2 x concrete tanks and general back filling of depressions from foundations.

QAL, CALCINER KILN DEMOLITION, GLADSTONE, QLD

Removal and disposal of nominated sections of the plant from the limestone train loadout through the conveyors, cold end building, kilns, contact coolers and discharge conveyors/ screwfeeders to the end of conveyors C3532/C3533. Decommissioning and dismantling nine calcinations lines within the working plant without disrupting the QAL operations. Nine precipitators, three chimney stacks, firing floor and rotary coolers were also demolished. Also in scope was the removal of SMF and Asbestos Lagging from approximately 1.2km of pipes, asbestos between floors of the Electro Static Precipitator and removal of asbestos from 4 chimney stacks. Major Projects Group also managed a \$4 million subcontract for the electrical disconnections and diversions as a part of the contract.

PROJECT HIGHLIGHTS

GRAINCORP, SHIPPING CONVEYOR GALLERY, GEELONG, VIC

Demolition of the GrainCorp ship loading Gallery. The site was located at the Geelong Terminal, an operating facility of GrainCorp, and was built partly on terminal land and partly over an existing port structure managed by Toll. The scope also included the removal of all asbestos sheeting, the removal of the existing HV cable and the re-roofing of the existing office.

ADELAIDE BRIGHTON CEMENT, CEMENT DEMOLITION WORKS, GEELONG, VIC

Removal of all asbestos, demolition of all buildings, conveyors and structures to 1.2 metres below natural ground level and the remediation of an estimated 33,000 tonnes of soil contaminated with organics and heavy metals. The project was conducted in 2 phases over a 3-year period.

DEVELOPMENT VICTORIA, DEMOLITION OF PLANTS 10 & 16 (JV), PORT OF MELBOURNE, VIC

Removal of asbestos and demolition of plants 10 and 16 and outbuildings located at the former GM Holden site in Port Melbourne, VIC.

CAULFIELD RACECOURSE DEMOLITION WORKS, MELBOURNE, VIC

Demolition of the 300m long two-story Guinea Grandstand at the Caulfield Racecourse in Melbourne. Demolition was undertaken to

ground level, whilst maintaining the use of the maintenance workshops underneath the stand throughout the demolition period.

CSBP, KWINANA ACID PLANT DEMOLITION, KWINANA, WA

Demolition consisted of the compressor house, conveyor crane structure, syn loop cooling fans and associated structure, concrete plinths and footings.

BHPB, FINUCANE ISLAND BENEFICIATION PLANT DEMOLITION, PORT HEDLAND, WA

Removal of all plant, equipment, buildings and associated conveyors, water tanks, thickeners, transfer stations, belt yard, surge bin, workshops, control rooms, substation. The main plant remained operational during the deconstruction. The scope also included the identification and removal of hazardous materials including asbestos and asbestos based paint.

HAMERSLEY IRON TOM PRICE, TOM PRICE, WA

Major Projects Group undertook several demolition projects for Hamersley Iron in the Pilbara region. One of those projects was the demolition and removal of major plant on Hamersley Iron's Tom Price Mine site. The scope include the demolition and removal of the Burner Building, the Dryer, Cyclones, a 12 metre conveyor and the felling of a 6 metre stack.

ICI LONDON, TIOXIDE PLANT DEMOLITION, BURNIE, TAS

Total demolition of the Tioxide Plant in Burnie Tasmania. 16,000 tonnes of scrap steel was processed to export grade on site and loaded out from Burnie Port. Local skilled labour was sourced for the Project from the Burnie area and came together to complete the project in a total of 7 months, a staggering 5 months ahead of schedule without incident.

RIO TINTO, ALCAN GOVE THICKENERS TANKS NHULUNBUY, NT

Demolition of three Washers/Thickeners tanks, pipework, mechanical equipment, electrical, and concrete at the Alcan Gove site, to allow for the installation of a Jacketed Pipe Heater facility for slurry heating.

SLN DONIAMBO NICKEL SMELTER, NOUMÉA, NEW CALEDONIA

Demolition of the redundant Nickel Smelter, including the entire structure, 8 kilns, 8 Elkem Furnaces, towers, chimneys, and bringing concrete structures to ground level. Additional contracts were won for the removal of the Nickel Palletizing Plant on the East Coast of New Caledonia in the Mining town of Poro and the removal of the ship unloading infrastructure along the Port access to the Nickel Mill in Noumea.

OUR CLIENTS

CLIENT FOCUSED

Major Projects Group provides demolition solutions for various blue chip and multinational companies across different industries.

We believe in not just building business relationships but in long-lasting partnerships that has led in the past to repeat business. One of our core values has always been to focus on our clients' needs and objectives, as they are the life-source of our business.

SOME OF OUR CLIENTS THROUGHOUT OUR HISTORY



GLENCORE





LENDLEASE, GARDEN ISLAND WHARF DEMOLITION (JV), SYDNEY, NSW



majorprojectsgroup

Demolition | Consulting | Engineering

Major Projects Group Pty Ltd
ABN 36 135 179 207

121 Woodstock St
Mayfield NSW 2304
Australia

+61 (0)2 4967 7900

info@majorprojects.net
www.majorprojects.net

